

University of Alberta Library



0 1620 2348 3777

TN
27
A3
N637
v.7:
no.5
1939
POLAR



EX LIBRIS
UNIVERSITATIS
ALBERTENSIS

NOR' WEST MINER

EDMONTON, ALBERTA

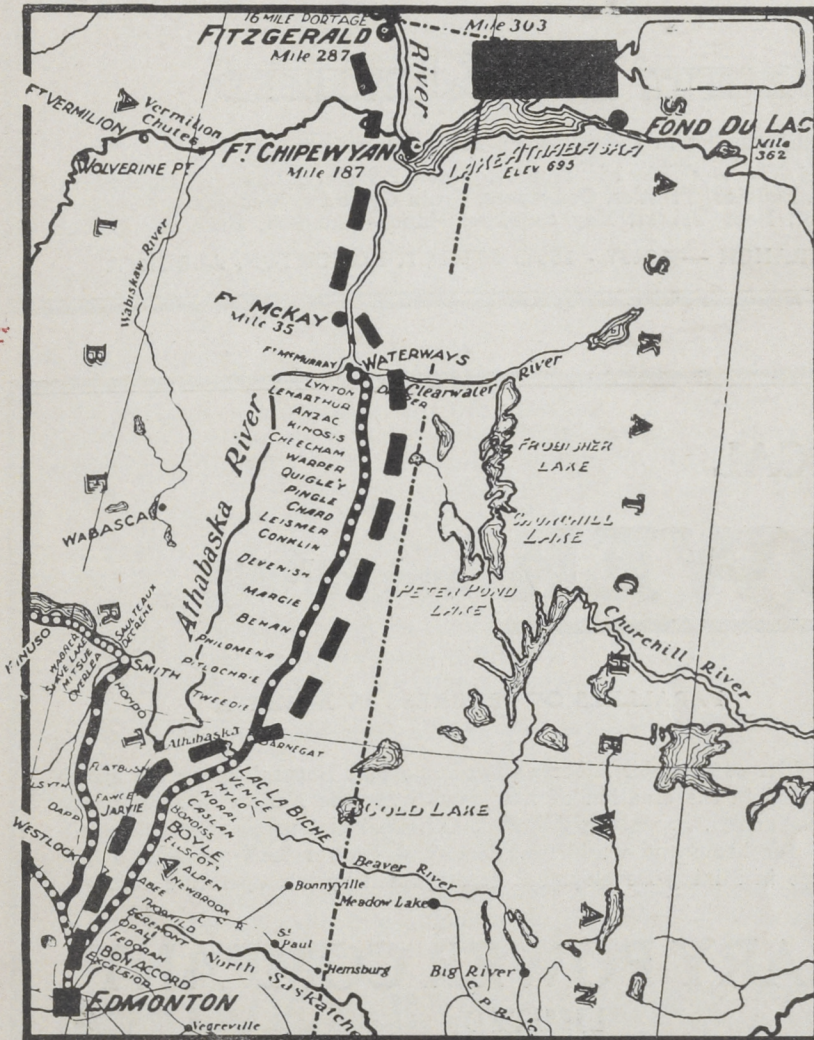
A monthly Devoted to Northern Mining Development in the Yellowknife, Great Bear and Great Slave Lakes, Goldfields, Alberta and Northern B.C., the Tourist and Game Hunting Attraction of Alberta.

Vol. VII.
No. 5

JULY
1939

CON MILL AT GOLDFIELDS STARTS OPERATION

25c A Copy



Where the 1000 ton mill on the Box Property is located, on Lake Athabasca. This mill after four years of development work recently commenced operation on large ore bodies. Before operation was possible a complete hydro power installation costing over two million dollars had to be built. The property has many millions of tons of fair grade gold ore to be worked.

**Canadian Circumpolar
Library
B-93 Cameron**

\$2.00 A Year



NO MATTER WHERE YOU LIVE
DOWN NORTH

You Too

MAY HAVE WATER ON TAP
with a Beatty Automatic Water Pressure
System — Electric or Engine Drive.

Now is the time to install one of these Systems and be ready for Fall and Winter. The Beatty is all Canadian made—A Pump for every use. Let the Beatty do the Pumping, let the pipe do the carrying, let the water do the running.

BEATTY BROS. LIMITED

Manufacturing in Canada since 1874—Manufacturers of
Electric and Hand Washers Electric Ironers, Floor Polishers, Laundry Equipment,
Pumps, Windmills, Ladders, Trestles, Conveyors, Grain Grinders, Incubators, Brooders,
Poultry Equipment, Door Tracks, Hay Carriers, Manure Carriers, Barn Equipment.

FACTORY BRANCH — 10237 - 109th STREET, EDMONTON, ALBERTA

ELECTRICAL

POWER and MINING

PARALLELS OF PROGRESS IN ALBERTA

Shoulder to shoulder Alberta's two important Natural Resources march forward in the creation of new wealth for the Nation . . . increasing employment . . . making Alberta's Oil, Coal and precious metals available for home and world use. Electrical Power made possible a new tempo in Mining Development accompanied by low operating costs.

CALGARY POWER COMPANY LIMITED

“Serving Alberta”

THE NOR' WEST MINER

A monthly devoted to Northern Mining Development in the Yellowknife, Great Bear and Great Slave Lakes, Goldfields, Alberta and Northern B.C. Mining districts, also the tourist and big game attractions of Alberta.

Correspondence solicited from all interested. Subscription, \$2.00 a year, Post free. Advertising Rates on application. Office of Publication, 201 Bank of Toronto Bldg, Edmonton, Alberta. Phone 24523.

SAYS THE MINER . . .

A sign of crazy times in Alberta is the fact that the Highway Traffic Board even stooped to consider giving some of our "get rich quick" friends a franchise over the Grimshaw Great Slave Lake Road. Yellowknife, first to benefit by the completion of even the winter trail by reduced freight rates, sat back and wondered what was going on. Peace River also stepped on the gas and said "No". Can anyone explain why the public should first be taxed to build a road and then have it calmly suggested that the result of its efforts should be turned over to a private concern for exploitation? Suppose it will be next in order for someone to discover that a franchise should be given "on the air."

* * *

This road, should, provided our Liberal friends at Ottawa and elsewhere, persuade British Columbia Patuilo, that the "boys" (Alberta) will not gum up the works politically, be one of the main links in the U. S. Alaska Highway. All the bunk written concerning B. C. routes as being most feasible to the contrary. When Mackenzie and other explorers went west and north across Canada, everyone of them travelled by Edmonton, Alberta and the Peace. Has the country changed

since? Nature has provided the most ideal route to Alaska through Alberta and the N.W.T. Why Ottawa should not even dare to have its Royal Commission headed by the Hon. Charles Stewart, an Albertan, enquire as to its feasibility is another example of public good being made subservient to political expediency. Alberta wants that highway and should get it.

* * *

After four years of development, the mill of the Consolidated Mining and Development Co. at Goldfields, is now turning its wheels. Not much noise has been made concerning this milestone in the mining progress of Lake Athabasca goldfields, but it means much to Goldfields, more certainly to Edmonton and other industrial centres.

* * *

"Can the pessimism" is a timely suggestion in connection with Yellowknife progress. Because a few wildcats have gone alee as wildcats often do, is no reason for people to cast doubts. Our advice is go and take a look and if you consider new finds, new mills and other progress a cause for pessimism go to it. This magazine predicts Yellowknife will be producing at least \$4,000,000 a year in gold inside of two years.

WHATEVER YOUR REQUIREMENTS MAY BE . . .

WE CAN SUPPLY YOU

Complete stocks of Spruce—Fir and Cedar Lumber—
Shingles—Roofing—Building Paper—Doors — Windows
Insulating Boards — Veneer Panels, Etc.

ARMITAGE-McBAIN LUMBER CO., LTD.

Jasper Ave. and 93rd Street

Edmonton, Alberta

OUR OBJECTIVE — YOUR ENTIRE SATISFACTION

CONSOLIDATED STARTS MILLING BOX PROPERTY ORE

After nearly four years of development work, with an expenditure of several millions of dollars, the 1000 ton mill on Box property at Goldfields recently went into operation. The plant is serviced by a 3300 H. Power hydro plant which will have an ultimate development of 6,600 H.P. In order to build this it was necessary to erect a power line over 12 miles of rough country, in addition to diverting the waters from several lakes by means of tunnels and open cuts.

Contrary to properties at the Yellowknife being developed by the Company this proposal is a huge low grade gold mine and reports have been made that the initial 1000 ton mill will eventually be stepped up to at least 4,000 ton daily capacity.

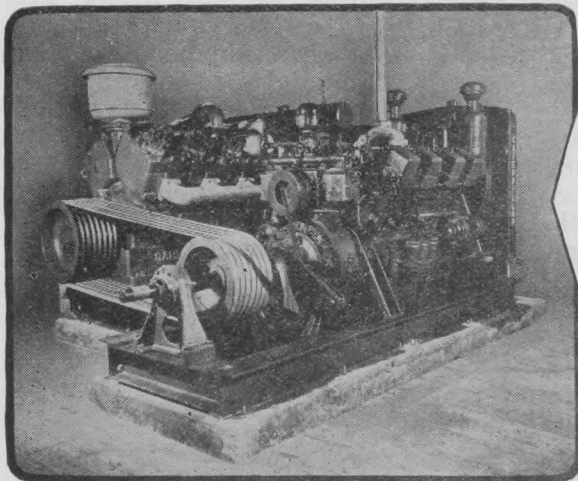
The first operation by the company was the developing of an ore body 3,600 feet long, varying in width from 100 to 200 ft. and this ore is now going through the mill at the rate of 600 tons a day. The first gold brick is expected will be cast at the end of July.

In addition to the mining operation a complete modern mining camp has

been built, with central heating, running water, sewerage system electricity, etc. Three two storey bunk houses accommodate 98 men each. A staff house accommodates staff and engineers. Dining room has accommodation for seating 250 people. It also has a seven cot hospital with complete X Ray service, and its commissary carries a full line of all kinds of supplies for disposal to the men working on the property.

The mill manager is Paul Elliott formerly of the Big Missouri Mine, another Consolidated development at Stewart, B.C. where a complete mill has been installed underground in order to overcome climatic conditions and heavy snowfalls.

The town of Goldfields is adjacent to the property and services other mining proposals in the area. Goldfields is a complete and up to date modern town with mayor and council stores, hotels, two movie theatres, banks beer parlor, liquor store, etc. It has mining recording office. A two roomed school has accommodation for 70 pupils. In addition to the Consolidated operation, other mining developments are Athona Mines Ltd., Nicholson Mines, E. A. G. Mines and several others.



CATERPILLAR Diesel ENGINES

ALBERTA DISTRIBUTORS

UNION TRACTOR & HARVESTER CO., LTD.

CALGARY — EDMONTON — LETHBRIDGE — CRANBROOK, B.C.

Lowering Compressing Costs at Canadian Mines

"Caterpillar" Diesel Engines have proved their merit the world over. Canada's northern mining areas are no exception. The D17000 shown here is providing dependable low cost power for the continuous operation of a Gardner-Denver Compressor. There is a "Caterpillar" Diesel Engine for every job. Ask us for performance records.

LILY JACK DEAL

The most likely looking mine in the making is the Lily-Jack where the Consolidated Mining and Smelting Co. Ltd. is carrying out extensive development, 60 men are at work under the management of Mr. Powell. A warehouse and depot has been established just north of Latham Island on the mainland, from which a summer road runs for $5\frac{1}{2}$ miles to the mine. In addition a portage road up the Yellowknife River connects the mine with the beach distance $1\frac{1}{2}$ miles. Mine has up to date buildings and already some \$200,000 has been expended on the property. It is stated that the ore will average three quarters of an oz. in gold to the ton. It is expected a mill will be placed on the property, if a road is not built from the mine to the Con. mill. This route has been surveyed.

John Morie and associates sold the Jack for \$17,500 cash and 200,000 shares of Ptarmigan Gold Mines Stock whilst the Lily was sold by Jack Stevens and associates for \$32,000 and a like amount of stock.

All reports indicate complete satisfaction with the prospect and evidently it is due to come into production within another year.

This property is directly connected by road, winter or summer with Yellowknife.

WILL TAKE CENSUS

A census of population in the Yellowknife district is shortly to be made with a view of giving the district direct representation on the North West Territories Council. It is understood that such representatives will be elected by vote.

HE WAS LATE

He was a miner, just off shift and came to town to see the sights. He arranged with the water taxi to meet him at 3 p.m. the same day so that he could get back on shift on time. The taxi driver kept the appointment but no passenger arrived. However, passing the same place, two days later at around 3 p.m. he observed his prospective passenger sitting on a rock.

"Hey you are late" he yelled to the taxi man. its 3.10 p.m. and you were to meet me at 3 p.m. There was no argument on the part of the taxi man, the customer is always right. The passenger was only two days late and did not know it.

THE PORTAGE AT VERMILION SCHUTES

In order for people living at Little Red River and other points on the Lower Peace to get supplies, it has been necessary to put a portage road around Vermilion Schutes. This road is four miles long and carries quite a large tonnage of freight every year, yet it has not a dollar expended upon it by the Government for many years. These people are surely entitled to have a few dollars expended on it, in order to make it passable, and the suggestion is passed on to our Social Credit Government, which has ever in view development of Alberta natural resources. The surrounding country is splendid farming lands and garden crops are grown that compare very favorable with those around Edmonton, although the district is 350 miles north east of Peace River.

Quality Merchandise

at

Sam Kushner & Sons

YELLOWKNIFE N. W. T.

CECIL HOTEL

104th St. and Jasper Ave.

For Cleanliness, Civility and
Well Ventilated Rooms

RATES \$1 up — SPECIAL
WEEKLY RATES

PHONE 21131

Mr. Beauchamp, Prop.

EDMONTON

ALBERTA

NEW STRIKE AT BEAULIEU RIVER

Good showings have justified new stakings in Beaulieu River District, 51 miles from Yellowknife, on Great Slave Lake. Madsen Red Lake Gold Mines hold property there staked by E. Blaisdell which it is stated will be diamond drilled immediately. Negus Claims consisting of a group of 11 staked by John Lindquist are also said to be interesting. Claims have excellent surface showings of calcopyrite, galena arsenopyrite carrying visible gold. The main vein is 7.30 feet wide

with length going across several claims. It is stated the vein showings are persistent as to length and width.

GIANT LOOKS GOOD

Splendid results are being obtained from surface and drifting on the Giant Group by B E A R with C. L. Hershman in charge. The vein being followed is strong and reveals excellent gold values. The property has some 300 tons of high grade ore in its bins which it is stated will be milled by a small pilot mill in the near future. This ore it is stated carries value up to 12 oz. to the ton.

WOODS 3-STAR EIDERDOWN ROBES

ALWAYS STOCKED

COMPLETE RANGE OF WOODS TENTS, TARPS, PARKAS, PACKSACKS AND EVERYTHING FOR MINER, PROSPECTOR AND CAMPER

SPECIAL—Woods "Prospector" (Full Size) EIDERDOWN, \$27.50

Complete Stock and Moderately Priced—Our 27 Years of Experience at your Service

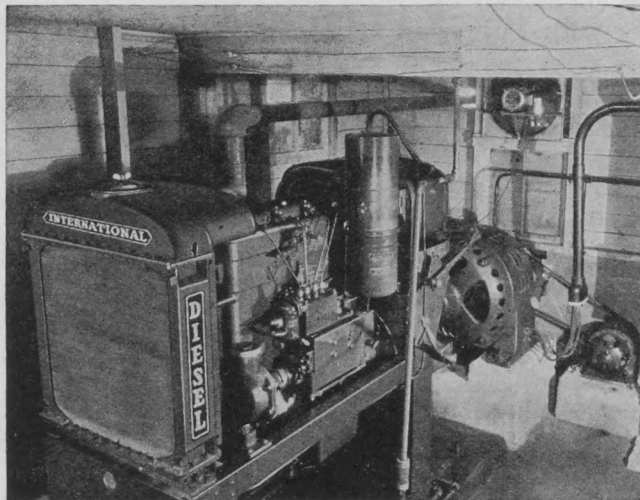
YOU ARE ALWAYS ASSURED OF A SQUARE DEAL AT

UNCLE BEN'S EXCHANGE

Est. 1912

Next to Rialto Theatre

Edmonton, Alberta



INTERNATIONAL
HARVESTER
DIESEL
SUPPLYING
POWER
FOR THE MINES

PD40 Power Unit
Operating 30 KW.
Generator

International power units are available in 11 sizes developing from 22 to 110 H.P., operate on gasoline, distillate, natural gas and diesel fuel. If you have a need for dependable and economical stationary power consult us for full information.

International Harvester Co. of Canada Ltd.

EDMONTON

ALBERTA

GOOD ROADS BEING MADE

Excellent roads are being provided by the Dominion Government on the Yellowknife townsite. One road completely circles the town along the waterfront, and another is being cut directly through the centre of the business area. Work is now proceeding under the direction of Mr. Henderson, Dept. of Public Works Engineer from Ottawa.

WATER SUPPLY FOR YELLOWKNIFE

The Dominion Government is putting in a water supply for residents at Yellowknife. The plant consists of a large water tank situated at the highest point, to which water will be pumped from the bay and from there service will be given through stand pipes erected at various intervals throughout the town.

INVESTIGATING PROVIDENCE ROUTE

Instructions, it is stated, have been issued for a preliminary survey of the winter road extension from a point on the Hay River road to Fort Providence. It is expected that this will have its terminal at Wrigley Harbour at the juncture of Great Slave Lake with the Mackenzie River, and will enable lower river freight to move on down North at least six weeks earlier than at present.



Diamond Drilling Contractors AND Diamond Drill Manufacturers

Complete Contracting and Sales Service
Maintained at:

VANCOUVER, B. C. — PORT ARTHUR, ONT.
KIRKLAND LAKE, ONT. and
YELLOWKNIFE, N.W.T.

Low Cost and Satisfaction Guaranteed

Boyles Bros. Drilling
COMPANY, LIMITED

PEACE RIVER AIRWAYS LIMITED

SCHEDULE

RATES

.. 1939 ..

McLENNAN — YELLOWKNIFE, N.W.T.

North (read down)		South (read up)	
Tues. A.M.	Fri. A.M.	Tues. P.M.	Fri. P.M.
6:00	6:00	7:30	7:30
	9:00	6:30	7:30
8:30	11:00	4:30	5:30
10:00	12:30	3:00	4:00
11:30	2:00	1:30	2:30

Passenger Rates

McLennan — Peace River	\$ 5.00
McLennan — Yellowknife	80.00
Peace River — Carcajou	15.00
Peace River — Fort Vermilion	20.00
Peace River — Hay River Post	60.00
Peace River — Yellowknife	80.00

Freight and Express

McLennan — Yellowknife. Per lb.	38c
Peace River — Carcajou	10c
Peace River — Ft. Vermilion	12c
Peace River — Hay River Post	25c
Peace River — Yellowknife	38c

NOTE: — Perishables shipped at owners risk. Rates reduced one third. Passengers allowed 35 lbs. free baggage with each fare. Return fares 10% discount, example:
Y.K.—P. River\$144.00

For further particulars, address Peace River Airways Ltd., Peace River or McLennan, Alberta or c/o Nor' West Miner, 201 Bank of Toronto Building, Edmonton, Alta.

THE PROSPECTOR

Contributed by Thomas Yellowless,
Asst. Mine Manager, Elizabeth Gold
Mine, Atikokan, Ont.

By the Pearly Gates O're the Sea of Space,
St. Peter sat with puzzled face
As he marked a blot on the faultless view.
'Twas a hardboiled guy in a green canoe.

The craft drew up by the Sainly Seat
And the stranger hollered "Good Morning
Pete."

St. Peter gasped but not with mirth
And frowned at the ribald son of Earth.

He spoke in a tone that was austere
"St. Peter to you. Whence came you Here?"
"I came, O Saint, if you have to know,
From the town of Atikokan, Ontario."

"Indeed" said the Saint with startled air,
"Upon my soul you're the first from there.
It's a quiet day, so I'll lock the gate,
And listen while you elucidate.
Get out of that perilous chunk of tree.
Atikokan, Ontario? Plumb new one on me.

The stranger's face had never a ruffle
As he handed the Saint his trail-worn duffle
A pack sack old and patched and dirty,
An Axe and an ancient thirty-thirty,
A miner's pick and a bag of rocks,
And a pair of green and ripened socks.

At last a roll that was flaming red.
"Whatever is that?" St. Peter said.
The stranger, pleased at the Saint's amaze
Replied "Them's Four Point Hudson Bays,
I hated to leave them back down there
They're worth about eighteen bucks a pair.

The twain sat down on the golden sand
By the Pearly Gate of the Promised Land
And the man produced with an expert tug
A slab of MacDonald's Chewing Plug:
He proffered the same to the reverent guide
St. Peter sniffed it—and nearly died.

The stranger a segment within his jaw
Returned the plug to his mackinaw
As he settled down on the wondrous beach
To make the long Atikokan speech.

They're wired for sound in that place of gold
And this man talked the turkey cold.
He spoke of gold, solid in vein,
On Elizabeth, Rebar and Upper Seine,
He spoke of fishing in Clearwater Lake,
How Steep-Rock iron made many a stake.

He traced the town to its ancient source
And pointed out with convincing force,
That Caribou Smith, not young but quite
placid,

Astride a bull-moose shot down Tracy Rapid.
The sun was quite in its setting paint,
When the man let up on the listening Saint.

"Some spot! Some spot! sighed Peter the Blest
"My son with honors you pass the test.
Take up this harp and grab these wings
Your talk is a treat for saints and kings.

Just onemore thing and in you go,
Your job in that world of sin and woe?
"Oh, mostly I perused around,
And prospected where gold is found."

Horror came in the Guardian's look
He grabbed the harp and the wings he took.
"Get out," he shouted, "Do not tarry"
"A Miner! By the great Lord Harry!"

"One such as you slipped past me once.
We haven't had peace for months and months.
The son-of-a-gun in his search for ore,
Is blasting holes in the heavenly Floor.

"The angels are scared by the dreadful noise
And the awful language the man employs.
Push off, old timer and do it now.
Two miners here! O Holy Cow!

"Hold on a minute! the man replied
I thought he'd gone to the other side
No wonder the Heavenly peace he'd kill,
That bird is God's Lake Dynamite Bill."
"Yes that's the man", the Saint he says,
"You can leave the pair of Hudson Bays.
Where you are going with heat is haunted
And blankets there will not be wanted.
They keep a gang of special stokers
For hard-rock men and mining brokers."

"But I've a scheme," said the mining man
And he quickly sketched the working plan.
I'll hand old Bill such a line of stuff,
That he can't get travelling fast enough."

"If you let me stay I will blast no more
Prospecting holes on the Heavenly Floor
I'll talk genteel if it takes a leg,
Like a mining broker from Winnipeg."
Gold's Lake Bill will be out of here,
And peace will ooze on the atmosphere."

The Saint he pondered con and pro.
"A day to do it, or out you go,"
He said at length, and his voice was grim.
The man passed through to the task set him.

He was easy to find was dynamite Bill
He was putting in shots on the side of the hill,
Bill was working to beat the Dutch,
With hammer and steel and powder and such.

The second miner stood by the hole
And shouted "Bill is she rich, old soul?"
Bill let up with his six pound maul
And answered "Hell, Joe, nothing at all."

"In this here field don't take no stock.
Thar ain't no colors in this here rock.
Do you know were a guy could make a stake?
How's things down there on Steeprock Lake?"

"Bill" drawled Joe, "I have heard them tell.
They struck it rich on the floor of hell."
And Bill remarked in his simple way,
"Is that right, Joe? The Hell you say."

He gathered up his mauls and picks
And steel and fuse and blasting sticks,
And he started off for the strike below.
His farewell words were "So long, Joe."

When Dynamite Bill had safely breezed,
Said Good St. Peter, more than pleased,
"The change will meet with much acclaim,
I must find out this bozo's name.
Go, herald, fetch him to the gate,
We've got to keep the records straight."

The stranger beamed when they asked his
name
To show a pride in a hard-won fame,
He winked at the Saint, did the hard-boiled one
And poked him light in the ribs for fun
As he said "My name is Dynamite Joe,
From the town of Atikokan, Ontario."

A week of holy calm went past
With never a cus word, never a blast,
And then as the day was growing late
A form appeared at the Pearly Gate.

St. Peter saw by the waning glow
The drooping figure of Angel Joe.
"Well, wha't wrong now?" enquired the Saint,
Says Joe "complainin', that I ain't."
"But the situation's just like this—

Thar may be a strike that I'd hate to miss
Down thar where I steered that roughneck
gent.

So I guess I'll follow the way he went.
It ain't the gold and it ain't the pelf
But I'm kinda stuck on that field myself.

"So here's your harp and here's your wings.
The harp has a couple of busted strings.
You see it's an awkward thing to pack,
And the strings were busted when I got back
From a little trip I made around
To look for breaks and likely ground."

"And now the truth it may be told
Your whole formation's wrong for gold.
Another thing that might be noted
How could a gold mine be promoted?

I've questioned angels far and near,
And thar ain't a minin' broker here.
But I'm much obliged for you used me well,
And I'll stake a claim for you in Hell.

St. Peter spoke in a saddened way
As the sun went down on the close of day.
"Joe, ther's your outfit and canoe,
And I pity the devil indeed I do.
However I wish you lots of luck
And the richest region you ever struck."

"Well, so long Saint" said Joe and sighed,
As he paddled off on the evening tide.
Joe must have picked a winning bet—
The boys are there prospecting yet.

The years and miles from Heaven's Gate
Are long and dark and desolate.
When gazing far across the gulf,
St. Peter views the fumes of sulph.

He sometimes hears a fearful yelp
As if the devil yelled for help.
He murmurs "Dear Old Dynamite Joe,
From the town of Atikokan, Ontario."

YELLOWKNIFE ORGANIZES

Yellowknife is getting town conscious. Recently it decided to organize a permanent "council" or body in order to take up all matters concerning the interests of the town: A public meeting held in the Gym Hall was fully attended and so Yellowknife is to have a real single voice in local matters, provided the Government at Ottawa will recognize it. Hitherto, local matters have been "no ones business" with the result that a few have taken it upon themselves to speak for all—not satisfactory in the opinion of many of the residents.

The meeting lined up a suggested program of what was required:—

1. Roads. They are getting them.
2. Water supply. They are getting this also.
3. Cleaning out of lanes and streets.
4. Proper lighting of same.
5. Establishment of a cemetery.
6. Provision of lands to enable garden stuff to be grown.
7. Revision of liquor regulations.
8. Public wharf where it will be most useable.
9. Bridge across the Snye.

With Ted Stewart in the chair, the meeting was well attended and a strong committee appointed to meet Government officials who had just arrived.

YELLOWKNIFE, 1938 and 1939

There is a remarkable difference in the Yellowknife of yesterday and as it is today. Tracts of bush uncleared and unsettled in 1938, in 1939 boast cabins, houses and real homes. Many homes compare favorably with those in Edmonton, and they have no housing problem, no subsidies, building loans, etc. Business houses are designed for permanency — electric lighting plants provide power and light, cold storage facilities exist, and you can get anything you want today in Yellowknife.

CONNELLY-McKINLEY LTD.

Funeral Directors

Air Transportation Facilities for the
North

10007 109th Street, Edmonton, Alberta
Phone 22222

SPLENDID NEWS FROM YELLOWKNIFE

Writing under recent date, Mr. Ted Stewart has the following to say in connection with the new strikes made in the Yellowknife District.

Three strikes last week — one at Wray Lake—one at Thompson Lake—and the find of all times, the one at “Despiration Lake”, which name should immediately be altered to “Consolation”. The stakers are Pete Davidson and Pete Lauder, who as you know are working for Tom Payne—who says “Most spectacular” — “enormously rich” and several more nice things.

Length of strike followed to date between two and three miles, may extend several miles when property is properly prospected. Location N.E. of Yellowknife, north of Beaulieu river—line of strike E. W., with usual variations peculiar to this area.

These past few days sounds good—the roar of planes, night and day, means that the people here still have faith in the district.

Thompson Lake find is very good and diamond drilling commenced right away by Boyle Bros, but will be overshadowed by the Payne strike for a time.

The one at Wray Lake by the C. M. & S. proves that there is some good things up there, and I understand also

very rich. The Sschverdt brothers had also a new find, but how rich I am unable at present to say.

I am going to drill on the Ted Group which adjoins the Ptarmigan mine on North West, as soon as possible. Shorty Nelson is looking the proposition over to determine whether it is advisable to put down another hole west of last years drill—which was rather promising — or open up vein on No. 3 and do some trenching.

I should have mentioned that the Thompson strike is on the Thompson Lundmark property. George Hamilton is already installed at the Negus camp as mining engineer.

REPORT ON SNARE RIVER

Dominion Government has recently issued a report by C. S. Lord on the Snare River district, Yellowknife area. It states “at least two occurrences of gold have already been found and much of area is geologically similar to Yellowknife Bay, Beaulieu River and Gordon Lake areas”.

Copies can be obtained on application to Director, Mines and Geology Branch, Ottawa.

CONTACT LAKE CLOSES DOWN

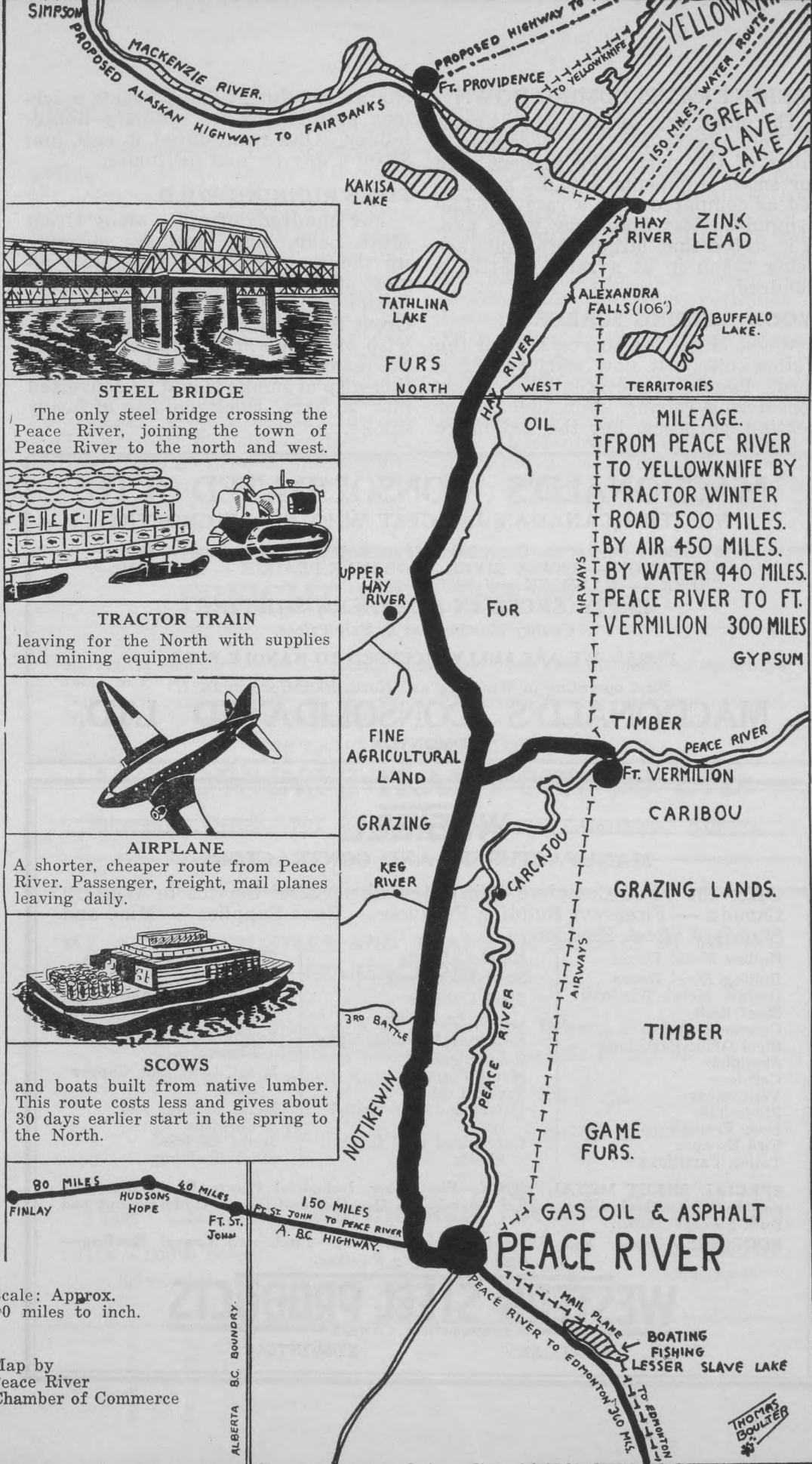
B E A R operation at Contact Lake has been closed down for the present. This is a silver proposition in the main. Monies hitherto expended on this property are to be diverted to exploration on B E A R claims and holdings in the Yellowknife.

EATON'S IN EDMONTON--A PART OF THE NORTH!

EATON'S service figures prominently in the life of the North—an important factor in supplying the needs of all its inhabitants. As far North as you can go, there you will find satisfied EATON customers! Send orders to EATON'S in Edmonton—where assortments are most varied and prompt attention is given to every detail.

“GOODS SATISFACTORY OR MONEY REFUNDED”

THE T. EATON CO
WESTERN LIMITED



STEEL BRIDGE

The only steel bridge crossing the Peace River, joining the town of Peace River to the north and west.



TRACTOR TRAIN

leaving for the North with supplies and mining equipment.



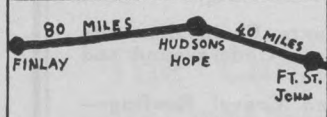
AIRPLANE

A shorter, cheaper route from Peace River. Passenger, freight, mail planes leaving daily.



SCOWS

and boats built from native lumber. This route costs less and gives about 30 days earlier start in the spring to the North.



150 MILES
 FT. ST. JOHN TO PEACE RIVER
 A. B. C. HIGHWAY.

MILEAGE.
 FROM PEACE RIVER
 TO YELLOWKNIFE BY
 TRACTOR WINTER
 ROAD 500 MILES.
 BY AIR 450 MILES.
 BY WATER 940 MILES.
 PEACE RIVER TO FT.
 VERMILION 300 MILES

Scale: Approx.
 50 miles to inch.

Map by
 Peace River
 Chamber of Commerce

THOMAS
 BOULTER

FREIGHT RATES COMING DOWN

The olden days of high freight rates to Yellowknife are fast becoming a thing of the past. The present rate for small shipments is \$2.25 a hundred as compared with a rate of \$4.50 a hundred less than four years ago. It is stated that larger shipments are being taken in at a rate of \$1.75 a hundred.

WOOD GETTING SCARCE

Wood is getting scarce around the Yellowknife. It now sells for \$8 a cord. People are evidently seriously considering relying upon fuel oil for heating purposes, but the gallonage

charge for this at 38c presents a serious problem to the ordinary householder. One man stated it cost him \$2.00 a day to heat his house.

FIRES RUNNING WILD

For hundreds of miles along Great Slave Lake, bush fires are cleaning up the timber. These fires start almost of their own accord and are impossible to control. Travelling along Great Slave Lake one could notice a wisp of smoke arising miles ahead of the main fire, and within half an hour this wisp of smoke would be converted into a huge thick column of heavy smoke.

MACDONALD'S CONSOLIDATED LTD.

WESTERN CANADA'S LARGEST WHOLESALE GROCERS

37 Houses West of the Great Lakes. 6 in Northern Alberta to serve you.
EDMONTON — PEACE RIVER — GRANDE PRAIRIE — DAWSON
CREEK — CAMROSE and RED DEER.

EXPERIENCED IN NORTHERN SHIPPING

Quality Merchandise at Fair Prices.

FURS!—WE ARE FULLY LICENSED TO HANDLE FURS

First operating in Winnipeg and North Battleford in 1871.

MACDONALD'S CONSOLIDATED LTD.

EDMONTON

WESTEEL

MANUFACTURERS AND CONTRACTORS

Offer the Most Complete Fabricated Sheet Steel Service in Western Canada — Fireproof Building Products — Road Supplies — Mine and Standard Sheet Products.

Hollow Metal Doors
Rolling Steel Doors
Hollow Metal Windows
Steel Sash
Casement Sash
Steel Office Partitions
Skylights
Cornices
Ventilators
Floor Tile
Door Frames
Fire Escapes
Toilet Partitions

Metal Cabinets
Steel Roof Deck
Steel Culverts
Corro Arch Culverts
Reflector Warning Signs
Road Signs
Metal Flume
Truck Tanks
Galvanized Corrugated
Iron
Galvanized and Black
Sheets

Sheet Copper and Tin
Plate
Metal Shingles and Siding
Tanks, Troughs, Cisterns
Ventilating Pipe and
Elbows
Metal Lath and Copper
Bead
Metal Ceilings and
Cornices
Metal Lockers
Steel Shelving

SPECIAL SHEET METAL WORK—For Mines, Industrial Plants, Grain Elevators and Buildings Generally — Steel Barrels for Gasoline and Oils— Underground and Bulk Storage Tanks.

ROOFINGS—Copper and Galvanized Iron Roofing—Pitch and Gravel Roofing—Asphalt Built-up Roofing.

WESTERN STEEL PRODUCTS

CORPORATION LIMITED

CALGARY

— EDMONTON

FORGOTTEN PLACES

Fort Vermilion is one of the "forgotten" places of Alberta. It is one of the oldest settlements in the Peace, although it is 350 miles by water from Peace River Crossing. It has a population in the district of over 1000 people. Has seven stores, hotel, etc., and all it requires is transportation facilities. In the summer time boats run down the Peace providing easy means of transportation and much cattle and other produce is shipped this way, although the major part of the wheat crop is utilized for dog feed. Vermilion has many settlements, Buffalo Head Prairie, 20 miles south, Lambert Point, 9 miles north, The Boyes District and the Buffalo Prairie, all of which are well settled. It

has a few roads over which cars are used but the main criticism in Vermilion is the fact that whilst they pay plenty in license fees they have no government road grants. Vermilion is connected with the Grimshaw-Great Slave Lake winter road by way of Liskar and Keg River. It has 15 miles of main highway towards that point, the balance being just wagon road. Motor roads run from Vermilion to Buffalo Head Hills 42 miles. to North Buffalo Prairie 42 miles and Lambert Point 8 miles.

Splendid crops are grown in the district, including cucumbers, tomatoes, melons, wild fruits and all the ordinary vegetables. Growing season is short but active. Vermilion is beautifully situated on the banks of the great Peace River and sunsets are superb.

FREIGHT FOR THE NORTH

During the summer months we operate barges and boats over the northern waterways route to all points in the North.

During the winter months we operate tractor trains between Grimshaw, Alberta, Great Slave Lake and the Yellowknife.

FOR RATES ETC., WRITE OR WIRE

YELLOWKNIFE TRANSPORT CO. LTD.

Edmonton Office—107 Revillion Bldg., and Grimshaw, Alberta

WE ACT AS TRUSTEES AND TRANSFER AGENTS IN MINING TRANSACTIONS, ETC.

Don't Risk Theft or Loss of Valuable Papers, Stocks,
Bonds or Valuables when they can be safe in one of
our Safety Deposit Boxes.

Accessible 8 Hours a Day

Inquiries Invited

The Canada Permanent Trust Company

10126 - 100th Street
Edmonton

H. L. Spankie
Manager

AND NOW IT CAN BE TOLD

The Yellowknife of yesterday with its wild catters, its airplanes roaring out over the sticks, its whispered conversation as to another "new strike" faded with 1938. Today there is a different picture, mines are now engaged in steadily turning out gold bricks to the extent of over \$1,500,000 in less than twelve months, with at least two other mines on the way to production. Prospects of yesterday are getting serious development and so business men in the Yellowknife say this, "We are doing better business than we did a year ago, we have settled down and are now on a payroll basis."

The wildcatter is absent—airplanes are silent, excepting only for trips in and out to the outside and ordinary servicing of mining camps in the interior. Building is not so brisk — a town has already been built, but Yellowknife is on the way to become a real asset to the mining wealth of Canada.

The Government is building roads around and across the peninsular. It is putting in a water supply service and doing other necessary work and has now recognized the importance and the durability of the Yellowknife by a system of taxation which is unique in Canada.

— ASSAYING —

Manufacturing and Analytical Chemists
Northern Laboratories Ltd.

"Formerly"

Christopher Riley Assaying Co. Ltd.
10176 104th Street Phone 22313
Branch Office, Yellowknife, N.W.T.

THOMPSON LUNDMARK

Reports concerning the Thompson Lundmark still indicate that this property is standing up to expectations and rumor has it that a mill will shortly be taken in.

GIANT GROUP

C. L. Hershman of the B E A R has a crew working on this property drifting on the vein. Has a bin full of extra high grade ore ready to mill. Vein shows up strongly at 120 feet. It is expected that a small mill will be placed on the property in near future.

NEGUS MILING REGULARLY

Negus mine is turning out regular gold bricks every fortnight with mine in full operation.

PAYROLL \$60,000

The stated payroll in Yellowknife at present time is around \$60,000 a month. This, merchants claim, represents a very nice business for the stores.

ABASANDS GOING FULL BLAST

Abasand Oils Limited, says Max Ball, President, is arranging to complete its development program within the next three months and will be in full production early in 1940. Quite a demand is arising both at Goldfields and Yellowknife for fuel oil and people at these two points are anxiously awaiting real production of crude and fuel oil from Alberta Tar Sands, in the hope that it will mean cheaper fuel prices in the mining camps. The present rate of 38.9c a gallon for fuel oil it is stated is prohibitive.

E. G. JONES & CO.

YELLOWKNIFE, N.W.T.

GROCERIES

CLOTHING

RADIOS

HARDWARE AND BUILDERS' SUPPLIES

TENTS

TARPAULINS

SLEEPING BAGS

PROMPT DELIVERY : FAIR PRICES : SATISFACTION

NORTHERN RESERVES

The Hon. R. B. Bennett once remarked at the time he "was to cure unemployment in Canada immediately after election" that "there was no need for relief in the North, for all could fish and trap and live off the country" He was quite right in saying this, for all can live in the north quite comfortably but he omitted to remark that whilst it is possible, it cannot be done because regulations will not let the whiteman do so.

Regimentation and restriction in the North has now reached the point of absurdity. Trappers and traders cannot trade or trap without proving they have resided in the North 4 years prior to passing "another regulation by Order in Council" at Ottawa. Reserves galore have been imposed which still further restricts the white man. The plea is to save the country for the Indian and the Eskimo. Most laudable provided it is not carried to an absurdity. Yellowknife Indians have a reserve which takes up a territory of over 300 miles by more than that distance north. Today, the market for caribou meat, which only Indians can kill enables them to get cash aplenty from the mining camps, and they only sell hindquarters at that whilst the whiteman has to see caribou pass his door unharmed, although he needs the meat. One youth got six months suspended sentence for carrying a loaded gun on the reserve. This is in a country where bears raid caches destroy tents, food supplies, etc. and legally the whiteman can only use a prospector's pick to hit 'em.

Men who are unemployed could

make a living doing the odd trapping but that is also "tabu". In fact there are more "tabus" to the acre in the North than in any other part of Canada.

Ottawa is so far away and it seems impossible for Government officials to get the right perspective. By all means protect the Indians but why "pamper them".

There is a careful propoganda going on all the time. that the advent of the whiteman is ruining the Indian and the Eskimo. If the fact that the Indian and the Eskimo is getting wise is ruination-sure it may be right, but "Lo" the Indian and "Charlie" the Eskimo now lives high wide and handsome and wants white mans stuff, radios, washing machines. motors. etc. and are getting them.

In 1929, certain reserves were put on in the North by the Hon. Charles Stewart, when Minister of the Interior. This was in connection with mining, some of these were taken off later, but the craze for so called game and other reserves in the North amongst Government officials has gon by common sense. A case in point is the Buffalo reserve, where it is stated wolves have become so numerous that local wits suggest it should be called a wolf preserve.

Indians who only have the right to hunt there, will not hunt wolves, for according to legend a gentlemans' agreement was made between the Indians and the wolves that both would hunt everything else but would not hunt each other.

YELLOWKNIFE HOUSES

FOR RENT or SALE or BUILT TO ORDER

Plans and specifications submitted
for approval.

TED STEWART

BUILDING SUPPLIES, LUMBER, MINE TIMBERS CONTRACTING
and HOUSING — YELLOWKNIFE, N. W. T.

Gorman's

LIMITED

EDMONTON
CALGARY
DRUMHELLER

Suppliers of Mining Machinery
and Supplies Since 1906

Charles E. Garnett, Manager

OIL PRICES AT YELLOWKNIFE

Naptha, 54.3 a gall; Coal Oil, 50.3;
Fuel Oil, 38.9; Gasolene, 42.5.

The above are wholesale prices as
quoted by B. A. Oil Co. and Imperial
Oil Limited.

Alexander Diamond Drill Co. Ltd.

C.P.R. Bldg., Toronto
EL. 2289

DRILLS AND CREWS
IMMEDIATELY AVAILABLE IN
Amos, Rouyn, Red Lake, Kenora,
Yellowknife, N.W.T., and anywhere
else in Canada

1 Cedar St. New York; Dominion
Square Bldg., Montreal; Empire
Block, Edmonton

IT WILL PAY YOU TO INVESTIGATE

In view of the active development going
on in the mining North, why not en-
quire concerning our well located prop-
erties in the Goldfields district.

In addition, we have recently acquired
an interest in a large well located group
of claims situated at Pensive Lake in
the Yelowknife District.

For Particulars Address

EDMONTON ATHABASCA
GOLD MINES LIMITED

709 Tegler Bldg. Phone 21484

WE EXECUTE ANYTHING IN THE
LINE OF

Sheet Metal Work

Promptly and reasonably, using
the best of materials and em-
ploying only skillful workmen.

Experts in

HOT AIR HEATING
AND VENTILATION

Barry Sheet Metal

Limited

10171-98th Street, EDMONTON
Phones 25623 — Residence 31266

Attention . . .

MINERS, PROSPECTORS and TRAPPERS

Write or wire Johnston Walker Limited, Edmonton, for anything you may need and
if we haven't it in stock we will procure it for you as quickly as possible and at
lowest cost. We carry a complete stock of "Woods" Sleeping Robes, Parkas and
Heavy Winter Underwear, Shirts, Coats, Footwear, etc.

JOHNSTONE WALKER LIMITED

Edmonton's Own Store

Established Over 50 Years Ago.

NOW CARRIES FUEL OIL

Latest addition to the Ryan fleet of trucks across the Smith Portage is an oil tank truck which can carry a load of 4½ tons of fuel or other oil. Fuel oil is a most important feature of Yellowknife's winter requirements. Fuel oil sells for 38c a gallon in the Yellowknife.

DISTANCES DOWN THE PEACE

It is a long way from Peace River Crossing to the Yellowknife by canoe: Peace River to Vermilion 300 miles. Vermilion to Little Red River 50 miles. Little Red R. to Jackfish Rapids 120. Jackfish Rapids to Mouth of Peace 70. Mouth of Peace to Fitzgerald 70. Across Portage at Smith 16 miles. Down Slave River to Jean Channel 180. Jean Channel to Yellowknife 125—roughly 900 miles.

MAKES NEW POWER PLANT

Complete industrial power plants that require no technical training to operate, and that can be set up and running in less than an hour after delivery, are being built by a Peoria, Illinois diesel engine manufacturer.

Consisting of a diesel engine and a generator, with all necessary electrical equipment built in, the units are offered in 15 and 20 kilowatt sizes.

They will be distributed locally by International Harvester Co. of Canada dealers for Caterpillar Tractor Co., the manufacturer.

The new electrical sets have unlimited uses. They are well suited for factories, estates, large farms, resorts, service stations, theatres, stores, etc., and can produce electric current for as little as one cent a kilowatt hour.

LATEST PICTURES FROM YELLOWKNIFE

August issue of the Nor' West Miner will contain the latest and most up to date pictures of the Yellowknife. It will also describe a canoe trip from Edmonton via Peace River to the Yellowknife. In order to get these pictures over 1000 miles were covered by canoe.

If you are interested in the North, this issue should appeal to you. Extra copies can be obtained by addressing the Nor' West Miner, 201 Bank of Toronto Building, Edmonton. Price 25c a copy.

COMPLETE PROSPECTING SERVICE

for your Property in N.W.T.
Particulars, Write or Wire

RAY McPHIE

Mineral Exploration and Development
11 Imperial Bank Bldg. Edmonton

LIBERTY MACHINE WORKS LTD.

Equipment to handle any work
Sam Nichols, Manager
10247 103rd Street,
Edmonton Alberta

CAST IRON, ALUMINUM, BRONZE, SEMI-STEEL and ALLOY CASTINGS

Machine and Blacksmith Work
Best of Service and Workmanship
Norwood Foundry Co. Ltd.
9111 111 Ave. Ph. 71742

NORTHERNERS . . .

Your eyes are all important
When necessary consult

Wm. T. Innes

Optician 10128 101st Street,
Edmonton

C. B. ATKINS

Surveyor and Engineer
510 Agency Bldg. Edmonton
Phone 27788
Mining Claims and Oil Lease
Surveys

SAW MILL MACHINERY

Emergency Mining Repairs
NICHOLS BROS.
Machinists, Brass and Iron
Founders
10103 95th St. Edmonton, Alta.

BUILDING MATERIAL OF ALL KINDS

Lumber, Sash, Doors, Glass,
Ten Test Board, Core Boxes,
Scow Planking
PRICES RIGHT
W. H. CLARK
LUMBER CO. LTD.
109th Street EDMONTON

For Blue Printing, Drafting,
Engineer's Supplies

TURNER DRAFTING CO.

McLeod Building
Ph. 21561 Edmonton, Alta.

W. T. COTTLE GUNSMITH

10250 101st Street
Repairs to all makes of Guns
Gun Parts and Rifle Sights

Telephone 22271

SAMUELS, BERCOVE & MAIN

Barristers, Solicitors, etc.
720 Tegler Building
Edmonton Alberta

MINING AND SHAFT GROUP

Mining and Shaft group owned by Frank Morrison, Yellowknife, consists of 9 claims which, he states carries values from 70c to 6½ oz. to ton. The width stated is from 6 inches to 4 ft. with length averaging 3 claims across. The property is situated on the S. W. end of Walsh Lake, 5 miles from Yellowknife. Mr. Morrison states the formation can be easily seen and is described in the Joliffe report.

DOMES CLOSE DOWN

The Dome Mines Limited closed down their Pensive Lake operation

recently, laying off crews but evidently still retaining properties. The reason given at Yellowknife was that ore averaged \$10 a ton and was too low in value for profitable operation under present transportation condition.

REPORT ON MACKAY LAKE AREA

A report on Mackay Lake Area has recently been issued by Dept of Mines Ottawa. Mackay Lake is immediately north of Lac La Ronge in Saskatchewan and is well mineralized. If copies are required, address, Director Mines and Geology Branch, Ottawa, Ont.

TO MINING COMPANIES AND FUR TRADERS IN THE NORTH

A Good Firm to Deal With.

CAMPBELL, WILSON & HORNE, LTD.

WHOLESALE GROCERS

Edmonton

Peace River

Grande Prairie

CORSER DUNCAN

TRANSPORTATION COMPANY, LIMITED

OPERATING BETWEEN

FITZGERALD, ALBERTA, and FORT SMITH DOCK, N.W.T.

Full Line of Modern Equipment to Handle All Clases of Freight

OVER OUR PRIVATELY OWNED ROAD

**Second Floor Bank of Nova Scotia
Building, Edmonton**

**FITZGERALD, Alta., and
FORT SMITH, N.W.T.**

EDMONTON

IS THE KEY TRADING POINT to the Mineral Areas of the North

All connected direct with Edmonton by the shortest Air, Water and Rail Routes.

Edmonton has served the North for a century of trading. It knows your requirements and carries full stock to meet the same.

**J. W. FRY,
Mayor.**

**J. HODGSON and R. J. GIBB,
City Commissioners.**

The Yellowknife, Great Slave Lake and the Lower Mackenzie River

Shipping Freight into the North is the Business of

Ryan Bros.

Operating

A COMPLETE FREIGHTING AND PASSENGER SERVICE OVER
THE SMITH PORTAGE

For Rates and Other Particulars Address

RYAN BROS.

300 MOSER - RYDER BUILDING, EDMONTON, ALBERTA

FORT SMITH, N.W.T.

CANADA

EDMONTON'S LUMBER HEADQUARTERS

Lumber of all kinds for either building or scows. Cedar Shingles, Doors, Screens, Windows, Interior Finish, and Millwork of any description, made to order, Donnacona, Firply, Royal and Gyproc Wallboards, Zonolite and Rock Wool for insulation, Paper, prepared roofings, Slate Shingles, Wall felts, Cement, Plaster, Lime, Brick, Wagon Oak, Paints, Varnishes, Builders Hardware and Blacksmith Coal, anything wanted in the Building Line can be purchased at HAYWARD'S.

REMEMBER HAYWARD'S STAND FOR RELIABILITY.

Special Attention Given to Northern Shipments.

RELIABLE PRICES, RELIABLE DELIVERY IS OUR POLICY
AND YOUR GUARANTEE.

Wire your orders for quick despatch to either Edmonton or Waterways.

HAYWARD LUMBER CO.

LIMITED

EDMONTON

ALBERTA

Alberta



OIL



**Alberta Reached Peak
Production in May, 1939
with 690,006 Barrels.**

**Production for first five
months of 1939 . . .
2,456,099 Barrels.**

DEPARTMENT OF LANDS AND MINES

EDMONTON

